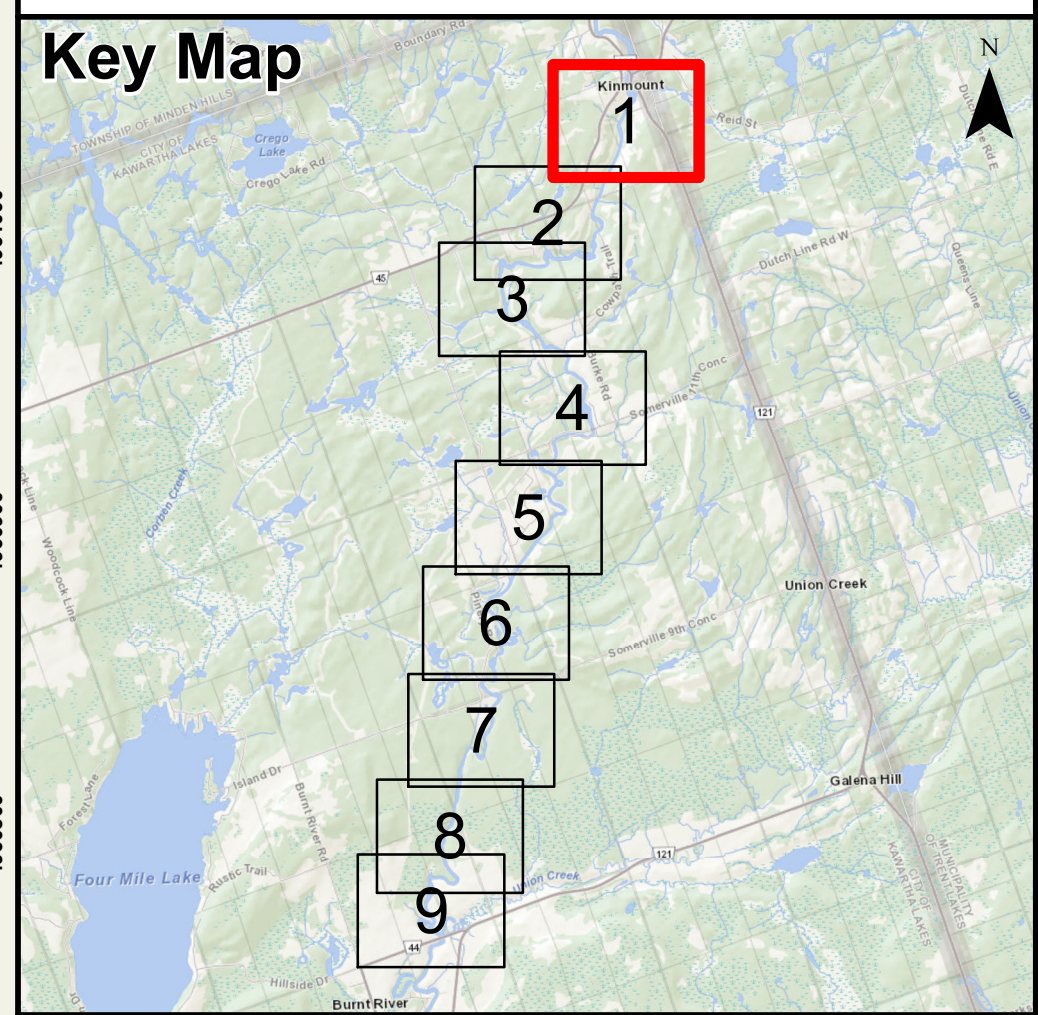




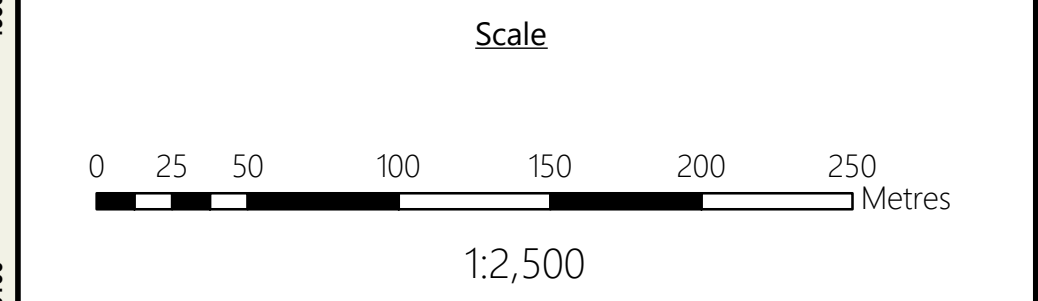
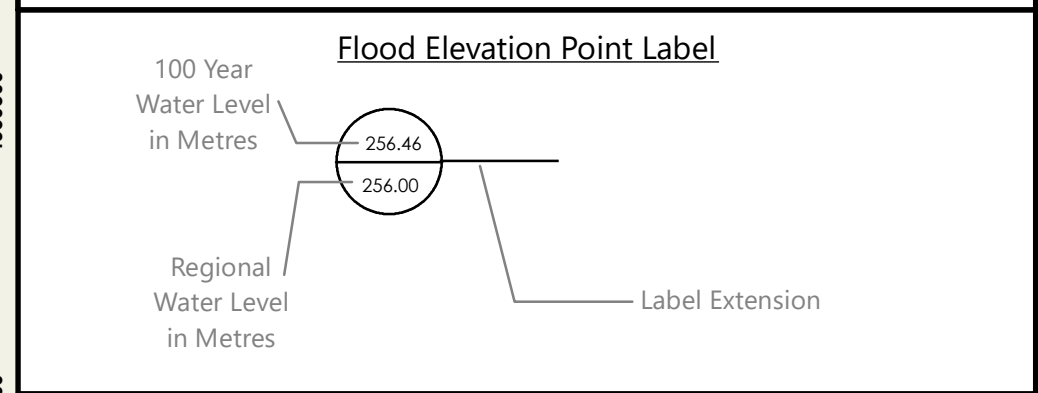
Burnt River
Floodplain Map
City of Kawartha Lakes
Printed: February 2026

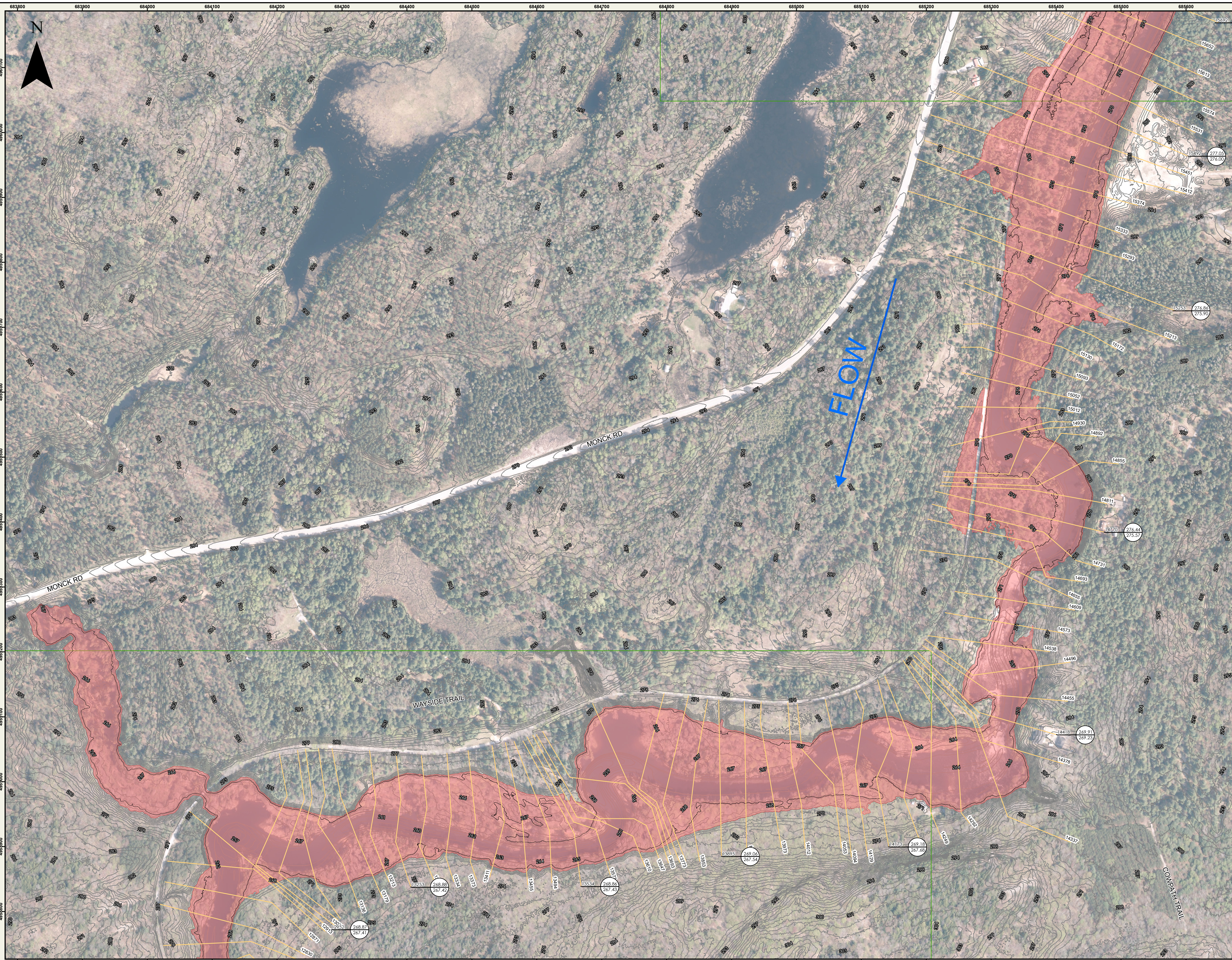
- Legend**
- Flow Direction
 - Burnt River Centreline
 - Cross-Sections
 - Study Limit
 - Timmins Storm Floodplain
 - Flood Hazard Limit (1:100-year)
 - Map Sheet Index
 - 1m Contours



- Notes:**
- 1) LIDAR (Light Detection and Ranging) survey data collected Spring 2023, by Airborne Imaging.
 - 2) Contours produced by D.M. Wills using LIDAR.
 - 3) Field Survey of structures by Kawartha Conservation, using RTK-GPS.
 - 4) Orthophotography SCOP92018.
 - 5) Vertical Datum - CGVD2013
 - 6) Horizontal Datum - CSRS(NAD83) UTM Zone 17N
 - 7) The flood inundation areas were delineated using the bathymetrically corrected LIDAR DTM produced by D.M. Wills Associates based on survey data provided by KRC.
 - 8) Flood plan modelling was prepared by D.M. Wills Associates.
 - 9) This map is prepared for use in conjunction with the Burnt River Flood Plain Mapping Study 2026.
 - 10) All mapped data meets provincial and federal geomatics guidelines and has been subject to peer review.
 - 11) Floodlines for tributaries of the Burnt River have not been delineated in these maps. Inundation shown in tributaries is strictly from backwatering of the Burnt River.
 - 12) This project is funded in part by the Government of Canada.

REVISIONS			
No.	Description	By	Date
1	Draft Floodplain Maps	RG	12/19/25
2	Final Floodplain Maps	RG	02/12/26

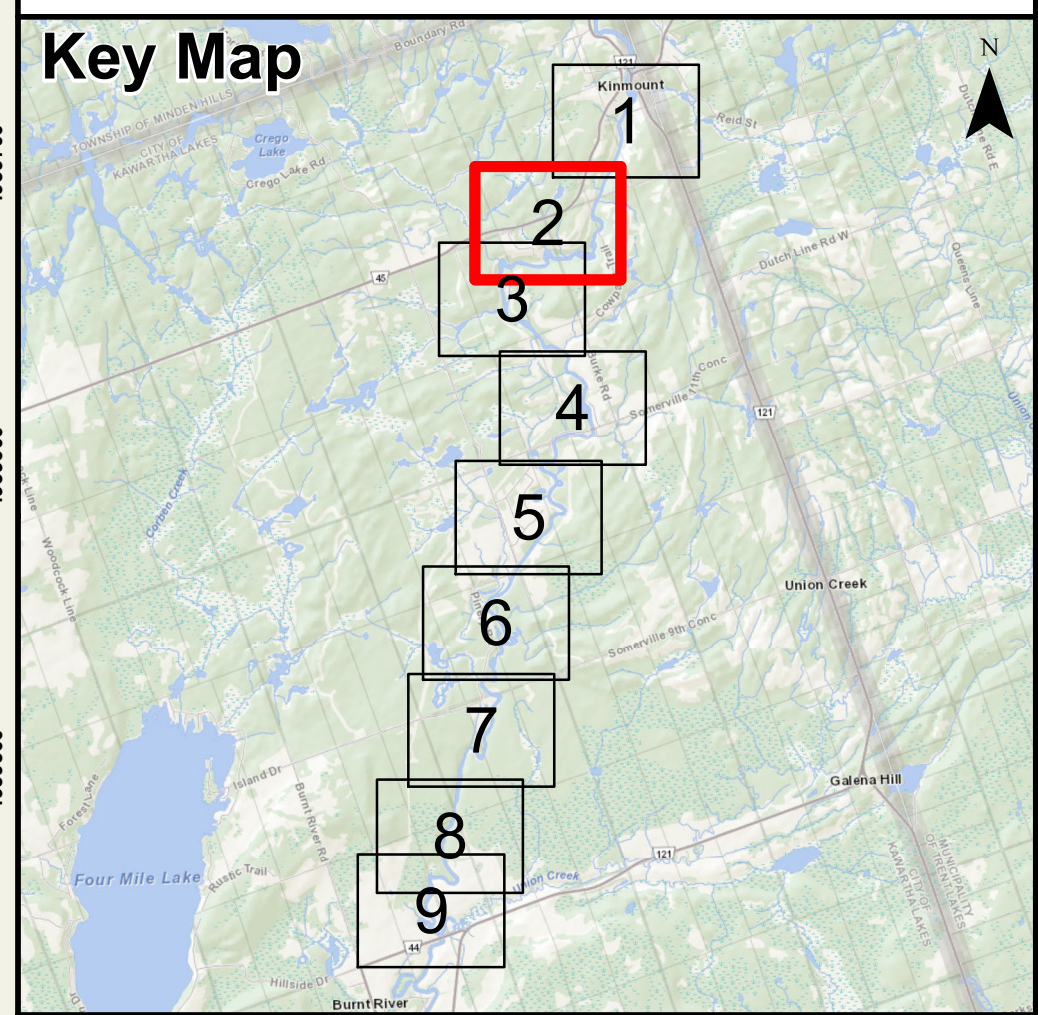




Burnt River
Floodplain Map
City of Kawartha Lakes
Printed: February 2026

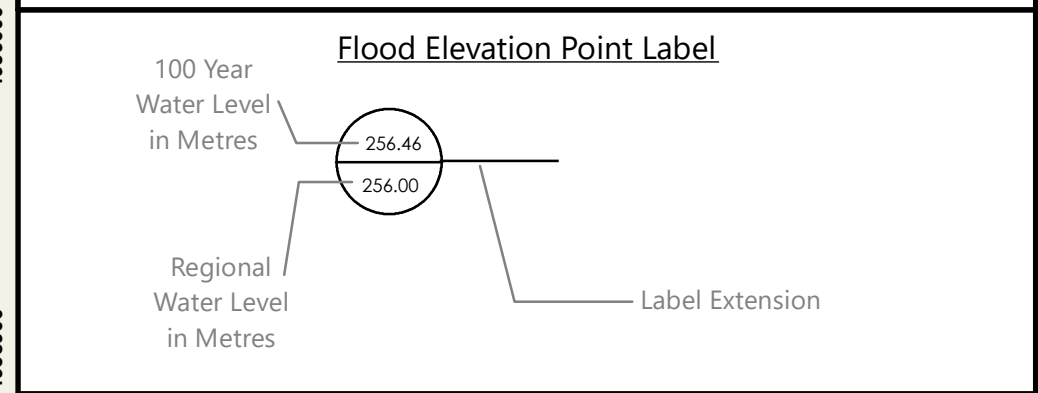
Legend

- Flow Direction
- Burnt River Centreline
- Cross-Sections
- Study Limit
- Timmins Storm Floodplain
- Flood Hazard Limit (1:100-year)
- Map Sheet Index
- 1m Contours







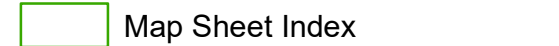
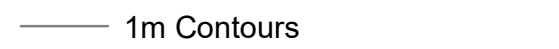


- Notes:**
- 1) LIDAR (Light Detection and Ranging) survey data collected Spring 2023, by Airborne Imaging.
 - 2) Contours produced by D.M. Wills using LIDAR.
 - 3) Field Survey of structures by Kawartha Conservation, using RTK GPS.
 - 4) Orthophotography SCOP92018.
 - 5) Vertical Datum - CGVD2013
 - 6) Horizontal Datum - CSRS(NAD83) UTM Zone 17N
 - 7) The flood inundation areas were delineated using the bathymetrically corrected LIDAR DTM produced by D.M. Wills Associates based on survey data provided by KRCA.
 - 8) Flood plan modelling was prepared by D.M. Wills Associates.
 - 9) This map is prepared for use in conjunction with the Burnt River Flood Plain Mapping Study 2025.
 - 10) All mapped data meets provincial and federal geomatics guidelines and has been subject to peer review.
 - 11) Floodlines for tributaries of the Burnt River have not been delineated in these maps. Inundation shown in tributaries is strictly from backwatering of the Burnt River.
 - 12) This project is funded in part by the Government of Canada.

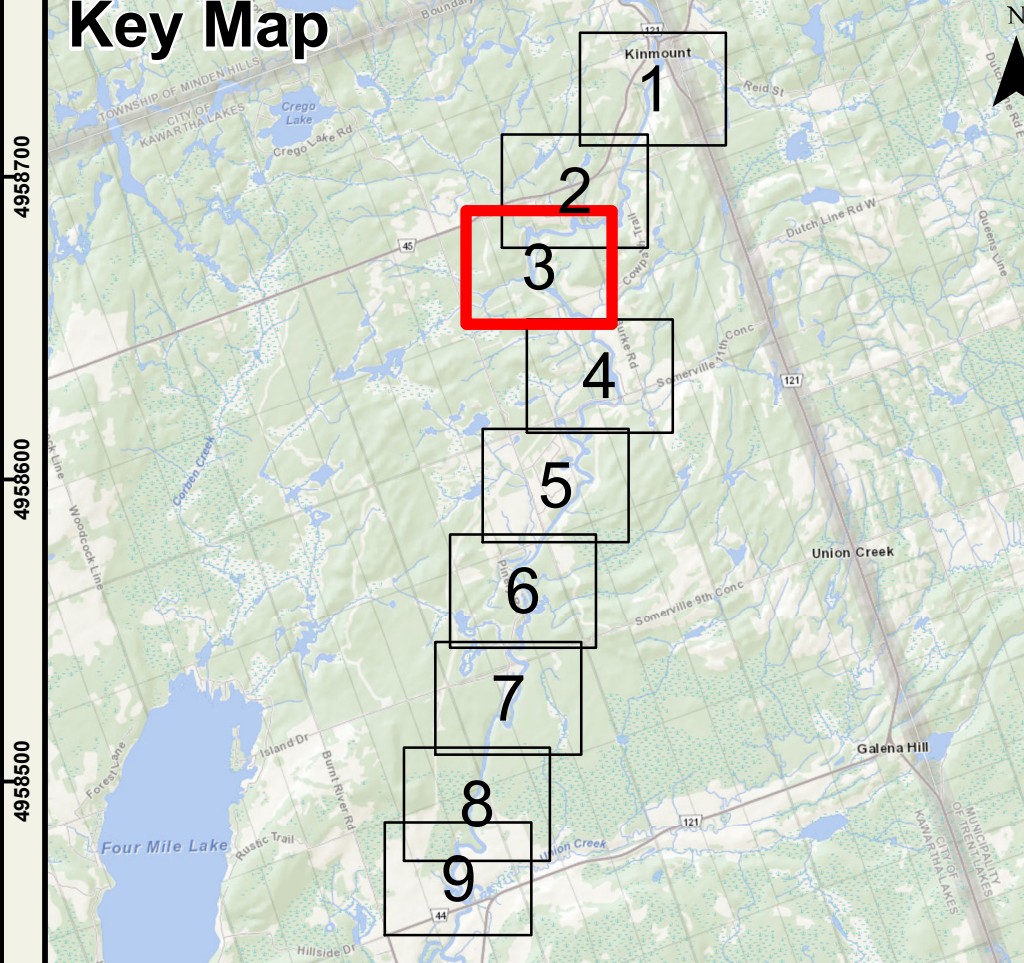
REVISIONS			
No.	Description	By	Date
1	Draft Floodplain Maps	RG	12/19/25
2	Final Floodplain Maps	RG	02/12/26



Legend

-  Flow Direction
-  Burnt River Centreline
-  Cross-Sections
-  Study Limit
-  Timmins Storm Floodplain
-  Flood Hazard Limit (1:100-year)
-  Map Sheet Index
-  1m Contours

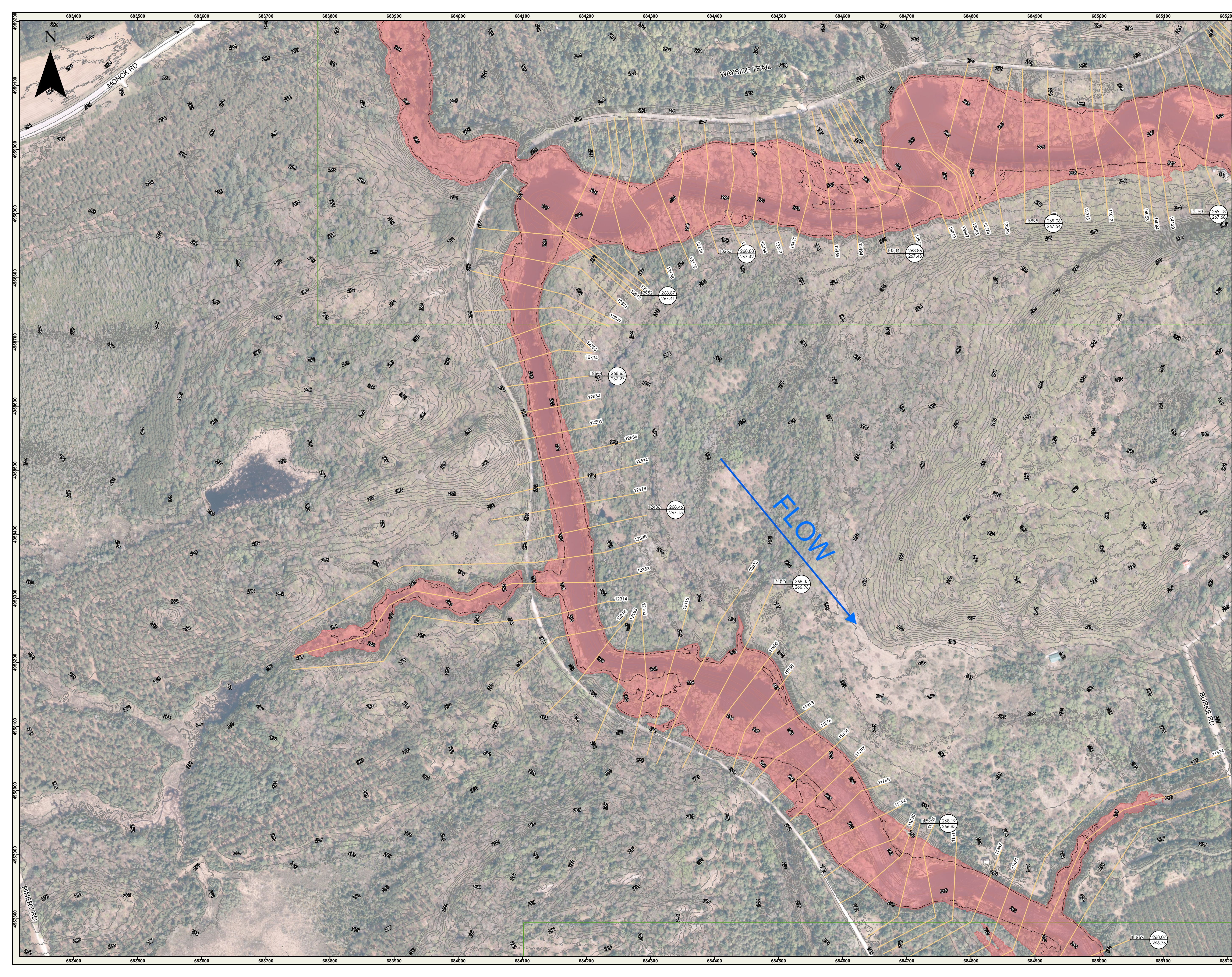
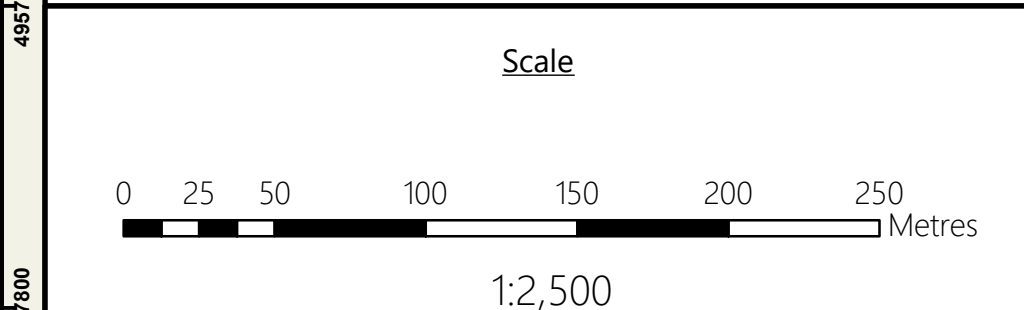
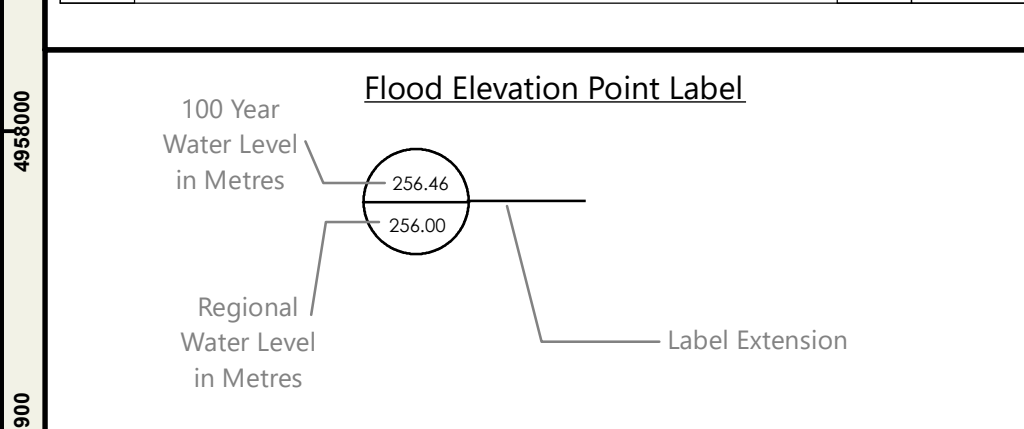
Key Map





- Notes:**
- 1) LIDAR (Light Detection and Ranging) survey data collected Spring 2023, by Airborne Imaging.
 - 2) Contours produced by D.M. Wills using LIDAR.
 - 3) Field Survey of structures by Kawartha Conservation, using RTK GPS.
 - 4) Orthophotography SCOP2018.
 - 5) Vertical Datum - CGVD2013
 - 6) Horizontal Datum - CRS(NAD83) UTM Zone 17N
 - 7) The flood inundation areas were delineated using the bathymetrically corrected LIDAR DTM produced by D.M. Wills Associates based on survey data provided by KRC.
 - 8) Flood plain modelling was prepared by D.M. Wills Associates.
 - 9) This map is prepared for use in conjunction with the Burnt River Flood Plain Mapping Study 2025.
 - 10) All mapped data meets provincial and federal geomatics guidelines and has been subject to peer review.
 - 11) Floodlines for tributaries of the Burnt River have not been delineated in these maps. Inundation shown in tributaries is strictly from backwatering of the Burnt River.
 - 12) This project is funded in part by the Government of Canada.

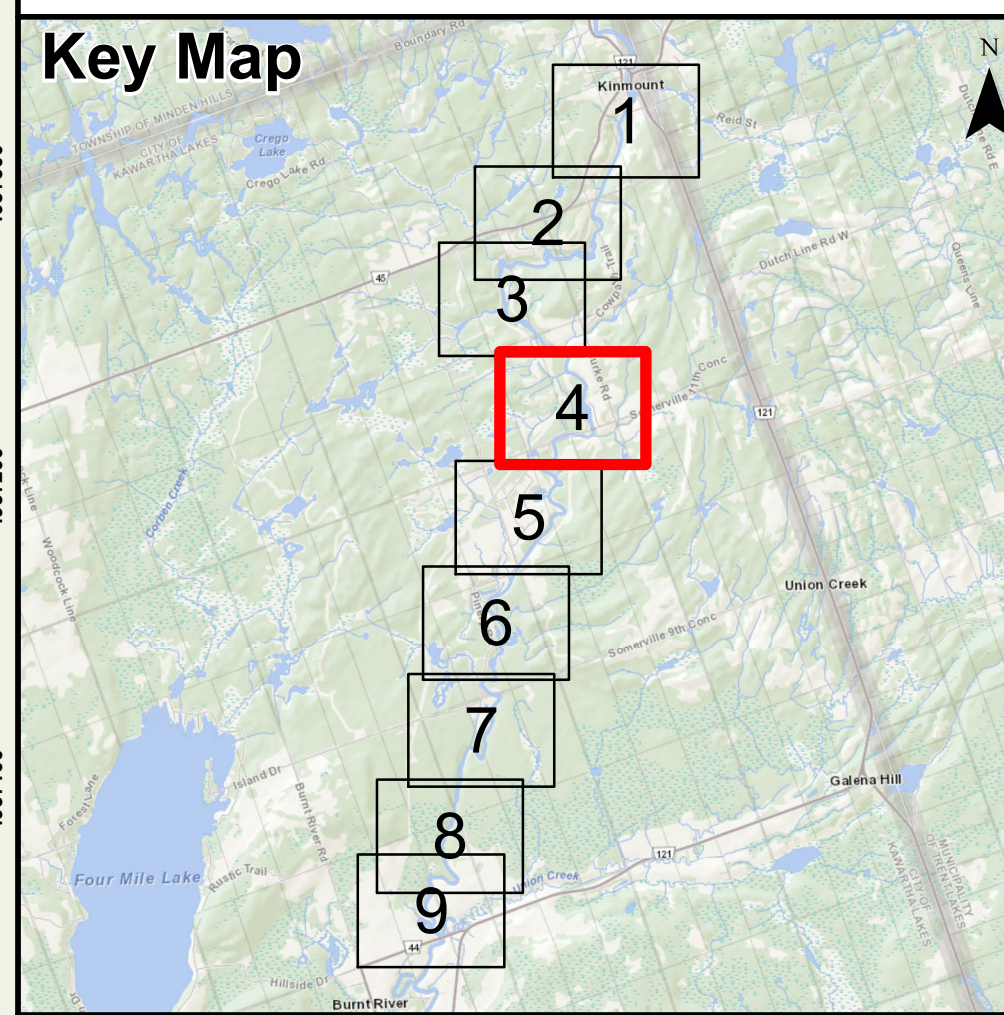
REVISIONS			
No.	Description	By	Date
1	Draft Floodplain Maps	RG	12/19/25
2	Final Floodplain Maps	RG	02/12/26





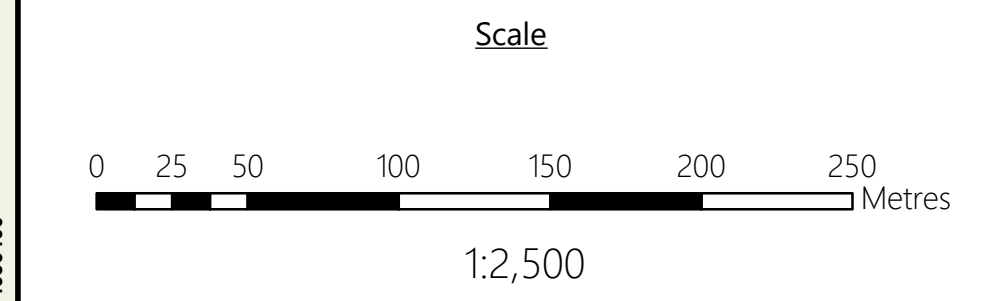
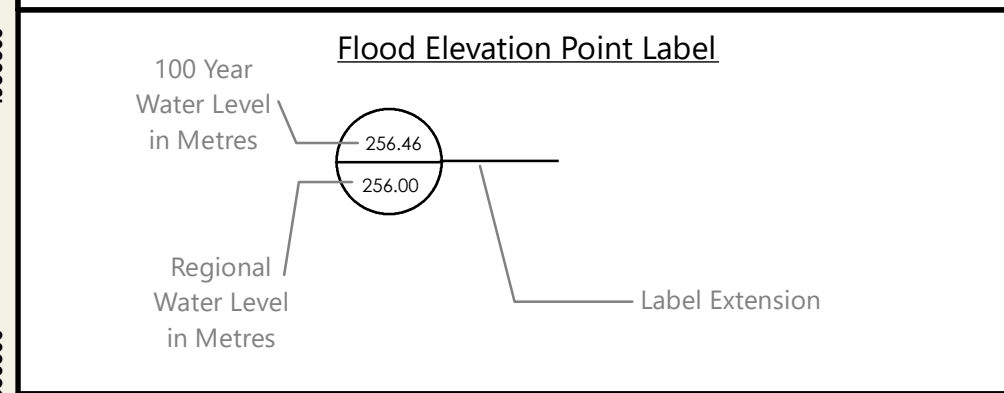
Burnt River
Floodplain Map
City of Kawartha Lakes
Printed: February 2026

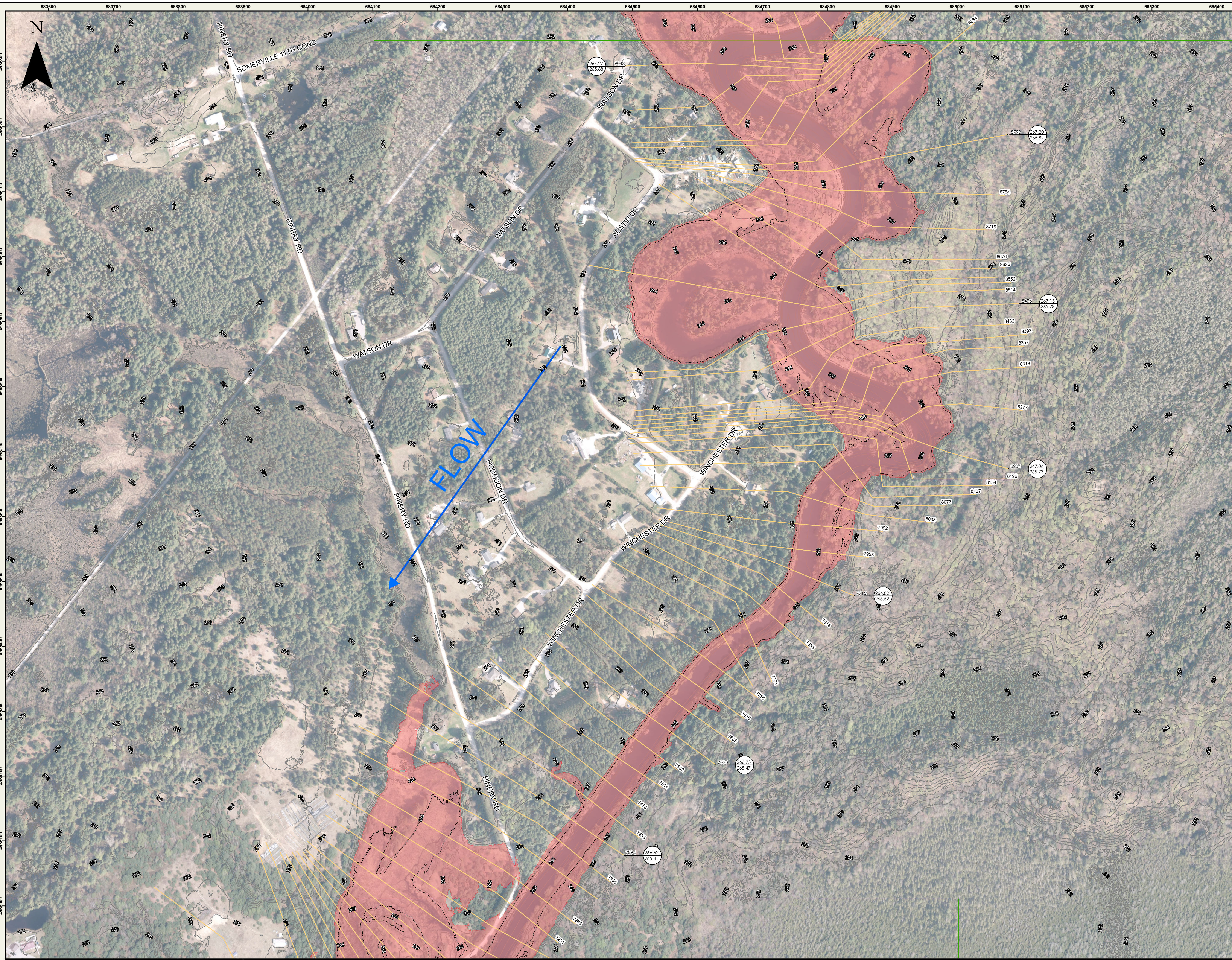
- Legend**
- Flow Direction
 - Burnt River Centreline
 - Cross-Sections
 - Study Limit
 - Timmins Storm Floodplain
 - Flood Hazard Limit (1:100-year)
 - Map Sheet Index
 - 1m Contours



- Notes:**
- 1) LIDAR (Light Detection and Ranging) survey data collected Spring 2023, by Airborne Imaging.
 - 2) Contours produced by D.M. Wills using LIDAR.
 - 3) Field Survey of structures by Kawartha Conservation, using RTK GPS.
 - 4) Orthophotography SCOP9/2018.
 - 5) Vertical Datum - CGVD2013
 - 6) Horizontal Datum - CSRS(NAD83) UTM Zone 17N
 - 7) The flood inundation areas were delineated using the bathymetrically corrected LIDAR DTM produced by D.M. Wills Associates based on survey data provided by KRC.
 - 8) Flood plan modelling was prepared by D.M. Wills Associates.
 - 9) This map is prepared for use in conjunction with the Burnt River Flood Plain Mapping Study 2026.
 - 10) All mapped data meets provincial and federal geomatics guidelines and has been subject to peer review.
 - 11) Floodlines for tributaries of the Burnt River have not been delineated in these maps. Inundation shown in tributaries is strictly from backwatering of the Burnt River.
 - 12) This project is funded in part by the Government of Canada.

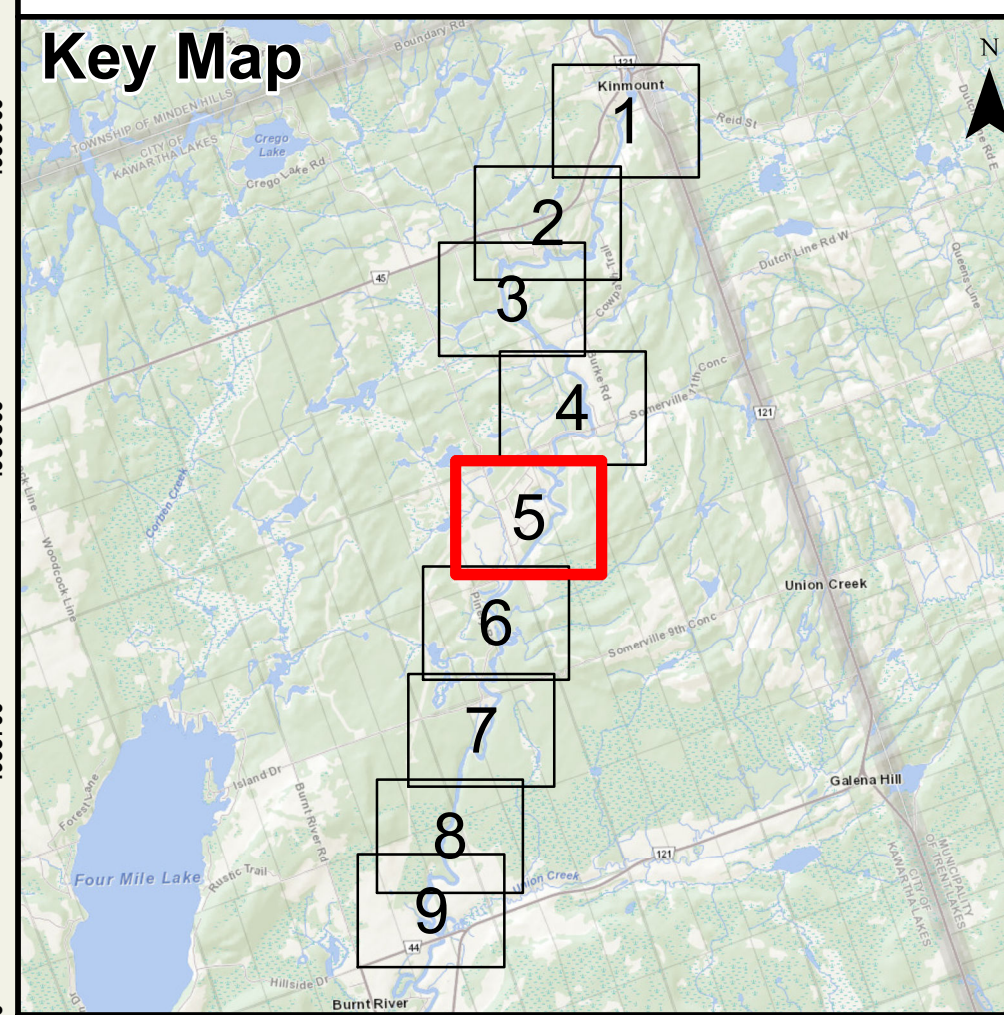
REVISIONS			
No.	Description	By	Date
1	Draft Floodplain Maps	RG	12/19/25
2	Final Floodplain Maps	RG	02/12/26





Legend

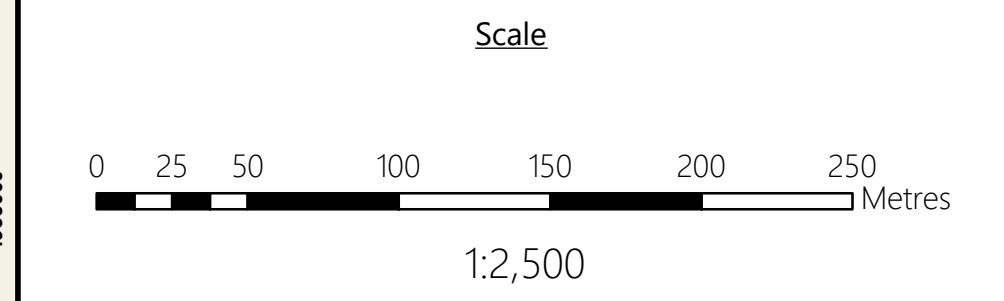
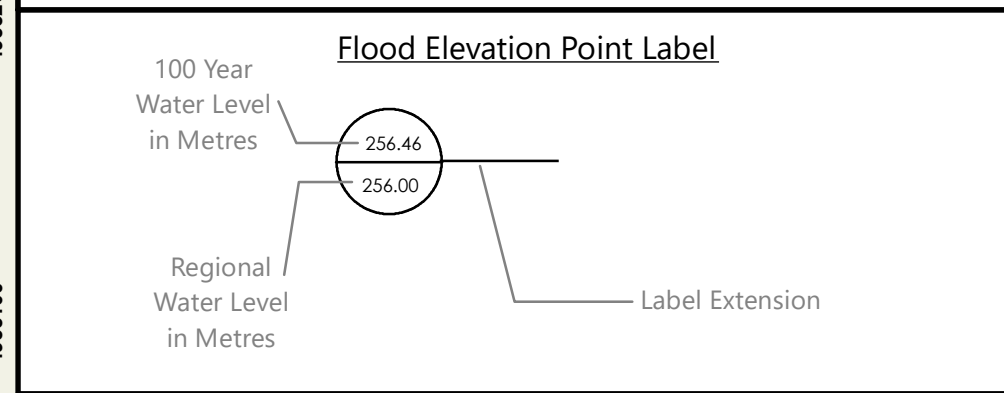
- Flow Direction
- Burnt River Floodplain
- Cross-Sections
- Study Limit
- Timmins Storm Floodplain
- Flood Hazard Limit (1:100-year)
- Map Sheet Index
- 1m Contours



Notes:

- 1) LIDAR (Light Detection and Ranging) survey data collected Spring 2023, by Airborne Imaging.
- 2) Contours produced by D.M. Wills using LIDAR.
- 3) Field Survey of structures by Kawartha Conservation, using RTK-GPS.
- 4) Orthophotography SCOP2018.
- 5) Vertical Datum - CGVD2013
- 6) Horizontal Datum - CSRS(NAD83) UTM Zone 17N
- 7) The flood inundation areas were delineated using the bathymetrically corrected LIDAR DTM produced by D.M. Wills Associates based on survey data provided by KRC.
- 8) Flood plain modelling was prepared by D.M. Wills Associates.
- 9) This map is prepared for use in conjunction with the Burnt River Flood Plain Mapping Study, 2025.
- 10) All mapped data meets provincial and federal geomatics guidelines and has been subject to peer review.
- 11) Floodlines for tributaries of the Burnt River have not been delineated in these maps. Inundation shown in tributaries is strictly from backwatering of the Burnt River.
- 12) This project is funded in part by the Government of Canada.

REVISIONS			
No.	Description	By	Date
1	Draft Floodplain Maps	RG	12/19/25
2	Final Floodplain Maps	RG	02/12/26



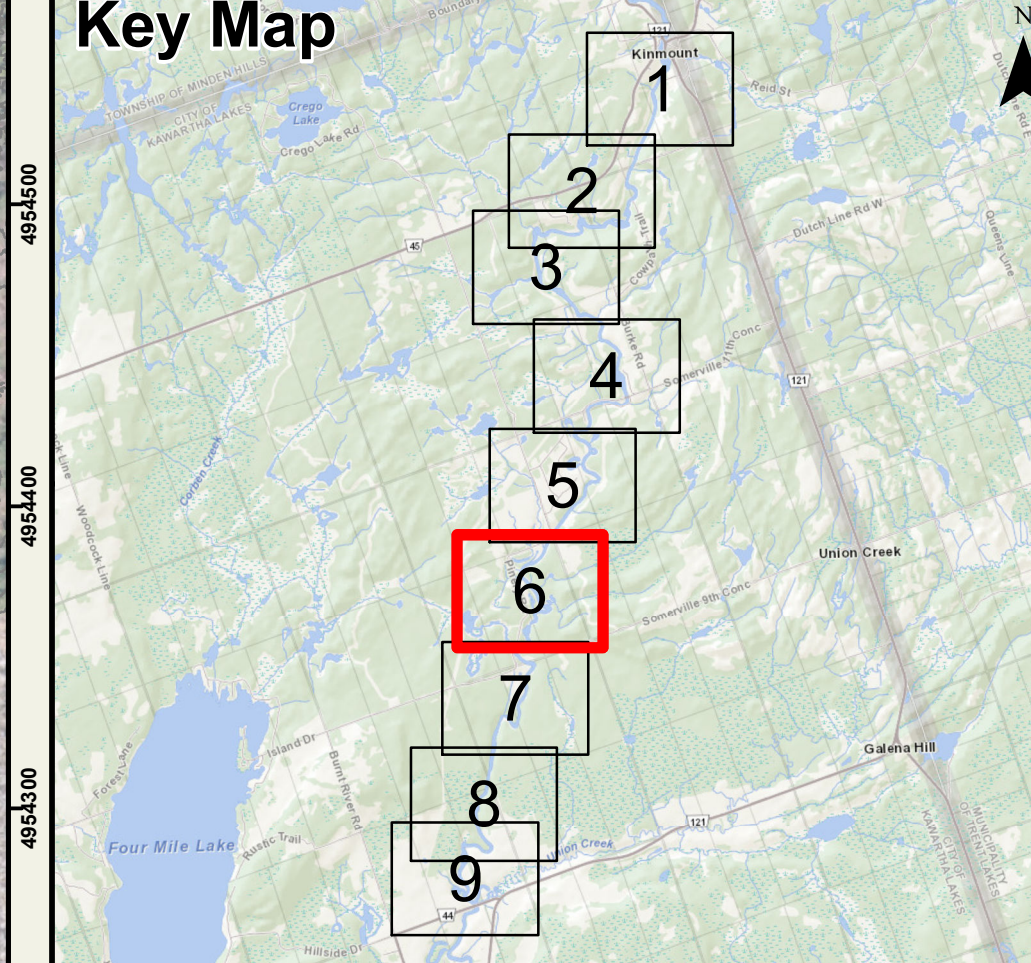
Burnt River Floodplain Map

City of Kawartha Lakes
Printed: February 2026

Legend

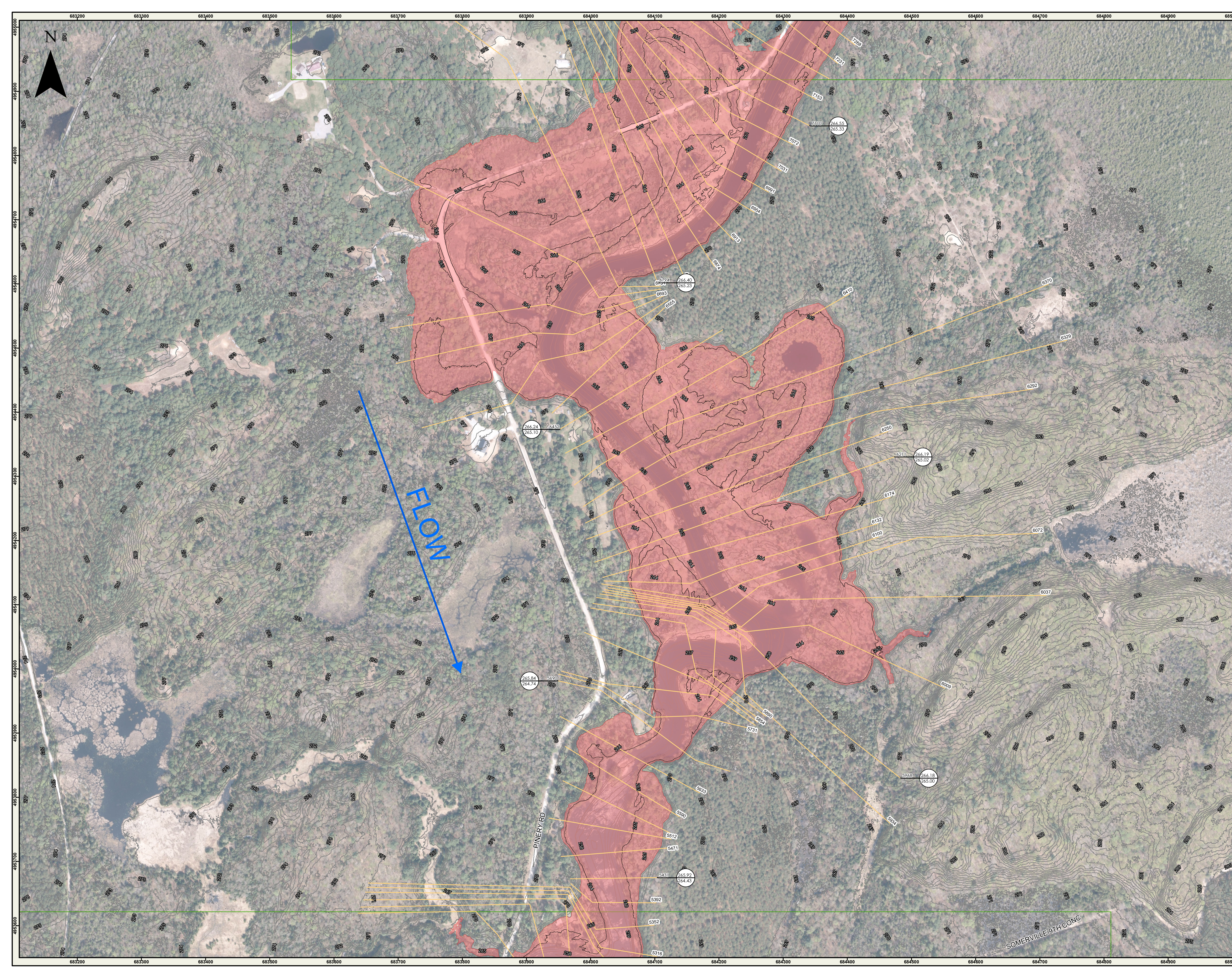
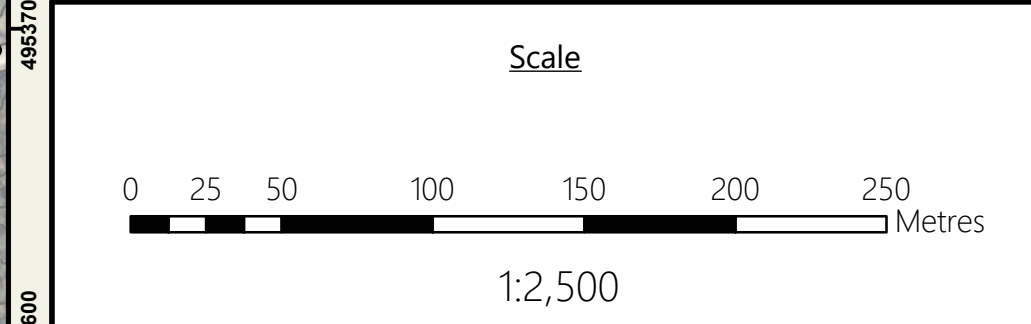
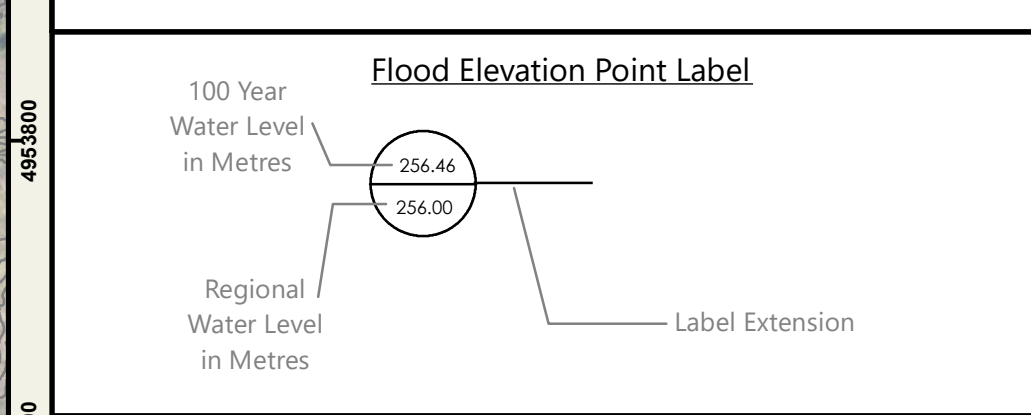
- Flow Direction
- Burnt River Centreline
- Cross-Sections
- Study Limit
- Timmins Storm Floodplain
- Flood Hazard Limit (1:100-year)
- Map Sheet Index
- 1m Contours

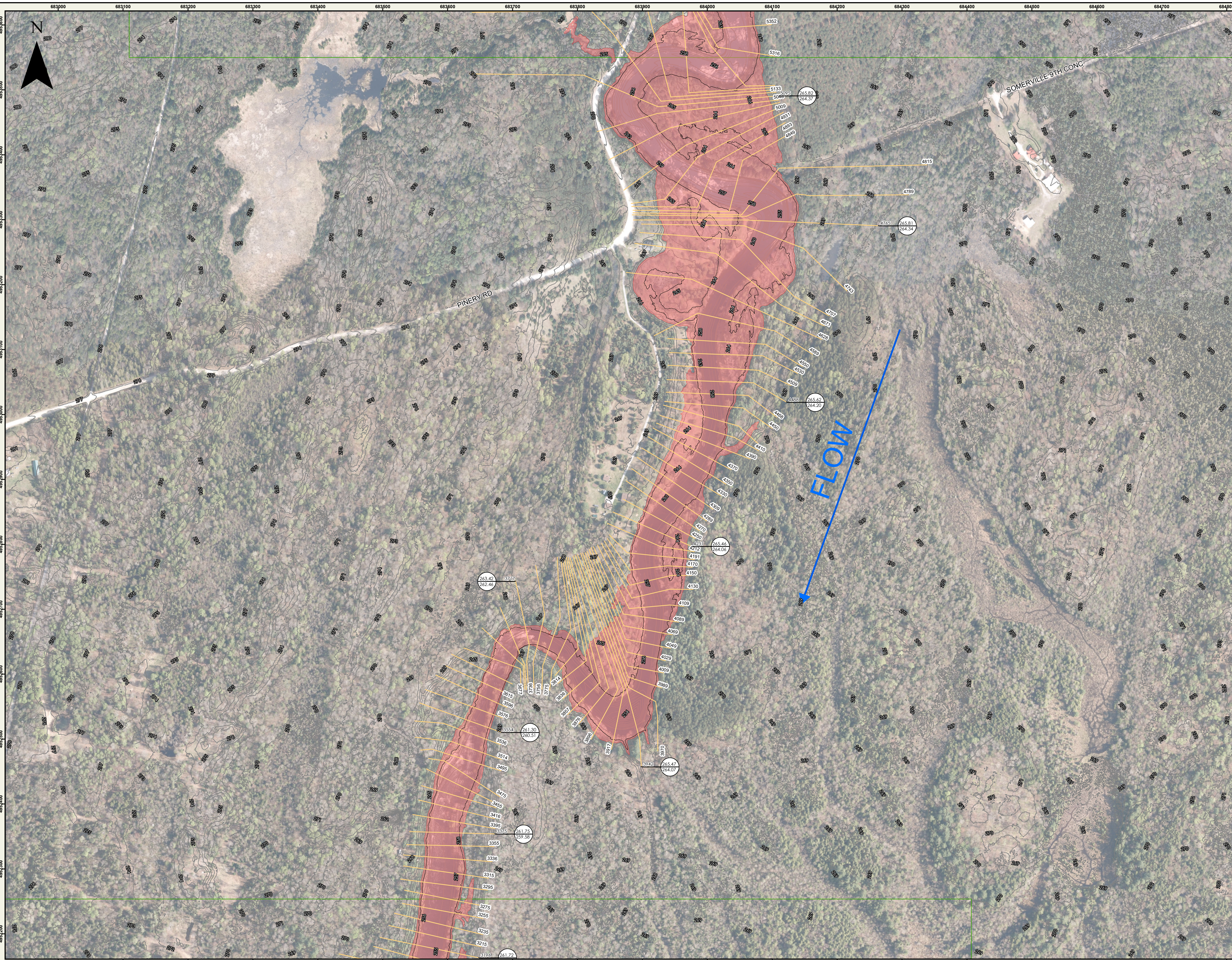
Key Map



- Notes:**
- 1) LIDAR (Light Detection and Ranging) survey data collected Spring 2023, by Airborne Imaging.
 - 2) Contours produced by D.M. Wills using LIDAR.
 - 3) Field Survey of structures by Kawartha Conservation, using RTK-GPS.
 - 4) Orthophotography SCOP091018.
 - 5) Vertical Datum - CGVD2013
 - 6) Horizontal Datum - CSRS(NAD83) UTM Zone 17N
 - 7) The flood inundation areas were delineated using the bathymetrically corrected LIDAR DTM produced by D.M. Wills Associates based on survey data provided by KRCA.
 - 8) Flood plain modelling was prepared by D.M. Wills Associates.
 - 9) This map is prepared for use in conjunction with the Burnt River Flood Plain Mapping Study, 2025.
 - 10) All mapped data meets provincial and federal geomatics guidelines and has been subject to peer review.
 - 11) Floodlines for tributaries of the Burnt River have not been delineated in these maps. Inundation shown in tributaries is strictly from backwatering of the Burnt River.
 - 12) This project is funded in part by the Government of Canada.

REVISIONS			
No.	Description	By	Date
1	Draft Floodplain Maps	RG	12/19/25
2	Final Floodplain Maps	RG	02/12/26

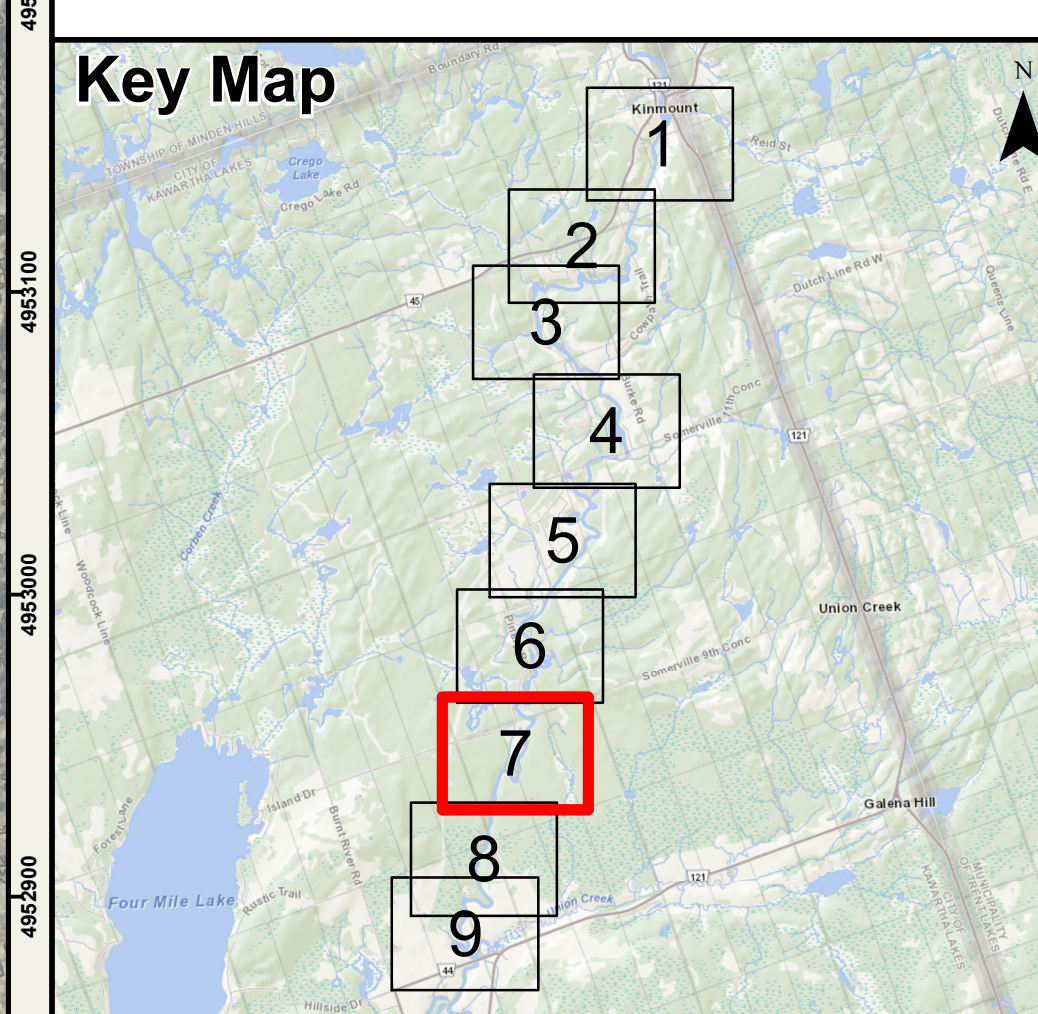




Burnt River
Floodplain Map
City of Kawartha Lakes
Printed: February 2026

Legend

- Flow Direction
- Burnt River Centreline
- Cross-Sections
- Study Limit
- Timmins Storm Floodplain
- Flood Hazard Limit (1:100-year)
- Map Sheet Index
- 1m Contours

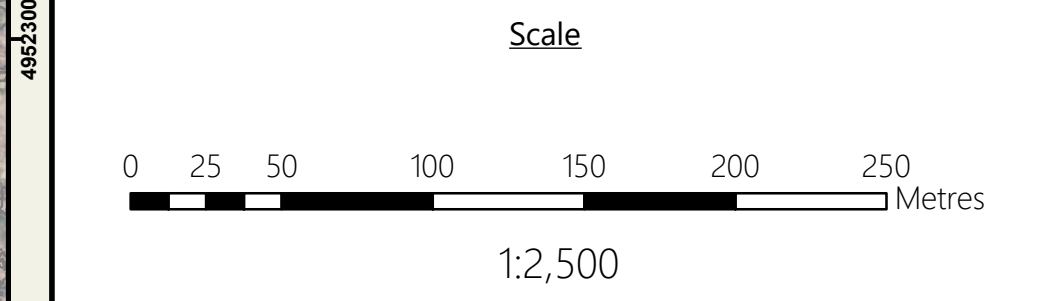
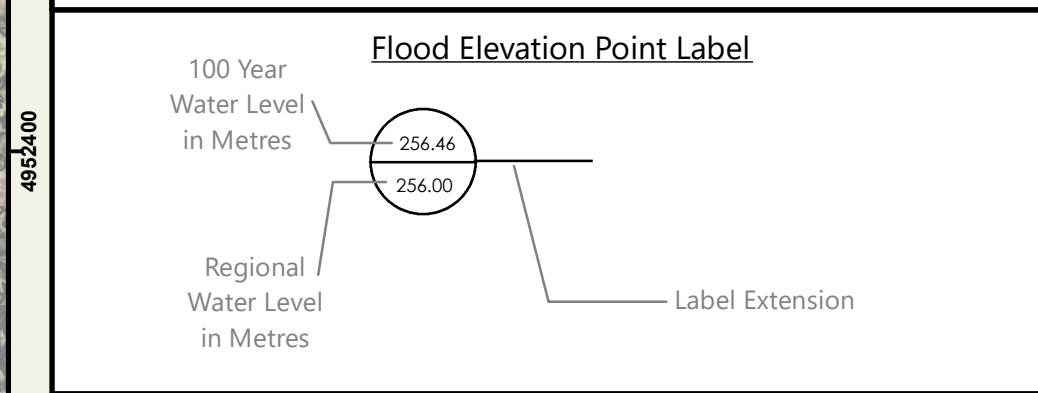




Notes:

- 1) LIDAR (Light Detection and Ranging) survey data collected Spring 2023, by Airborne Imaging.
- 2) Contours produced by D.M. Wills using LIDAR.
- 3) Field Survey of structures by Kawartha Conservation, using RTK-GPS.
- 4) Orthophotography SCOP9/2018.
- 5) Vertical Datum - CGVD2013
- 6) Horizontal Datum - CSRS(NAD83) UTM Zone 17N
- 7) The flood inundation areas were delineated using the bathymetrically corrected LIDAR DTM produced by D.M. Wills Associates based on survey data provided by KRC.
- 8) Flood plain modelling was prepared by D.M. Wills Associates.
- 9) This map is prepared for use in conjunction with the Burnt River Flood Plain Mapping Study, 2026.
- 10) All mapped data meets provincial and federal geomatics guidelines and has been subject to peer review.
- 11) Floodlines for tributaries of the Burnt River have not been delineated in these maps. Inundation shown in tributaries is strictly from backwatering of the Burnt River.
- 12) This project is funded in part by the Government of Canada.

REVISIONS			
No.	Description	By	Date
1	Draft Floodplain Maps	RG	12/19/25
2	Final Floodplain Maps	RG	02/12/26



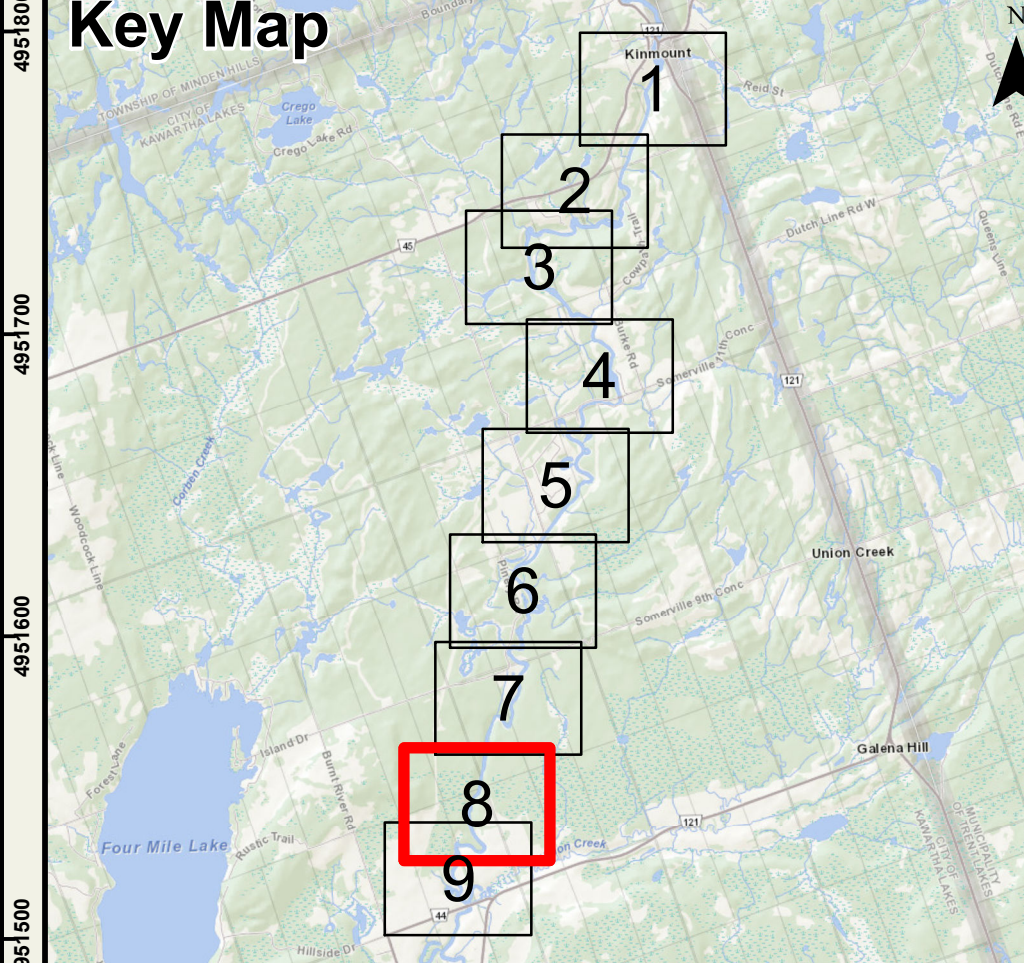
Burnt River Floodplain Map

City of Kawartha Lakes
Printed: February 2026

Legend

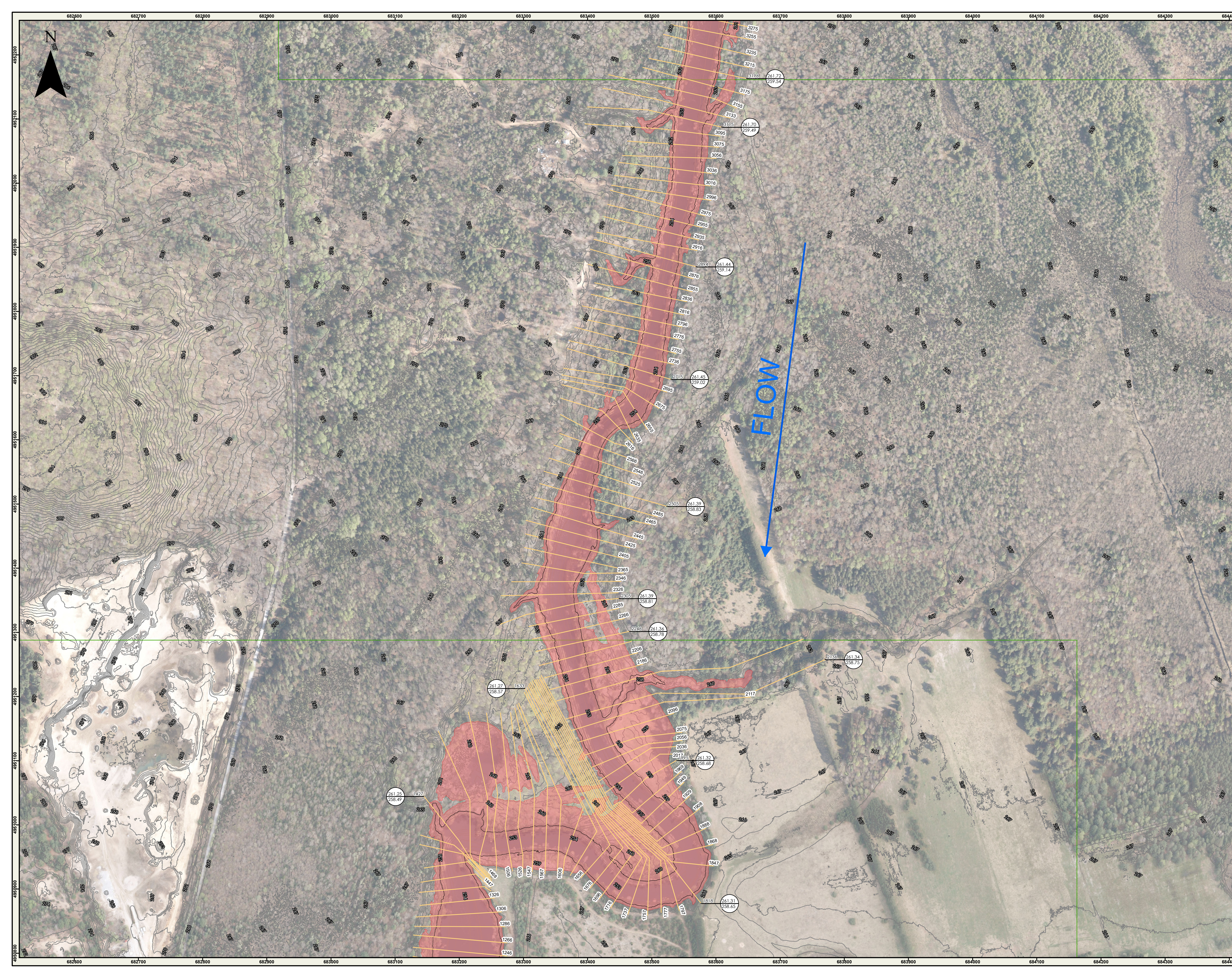
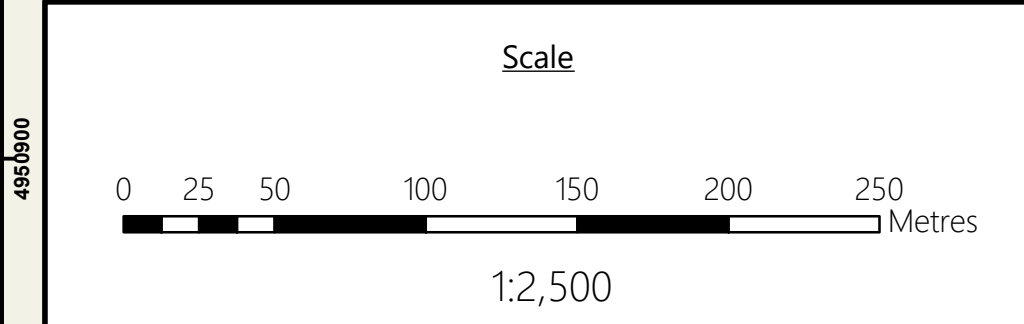
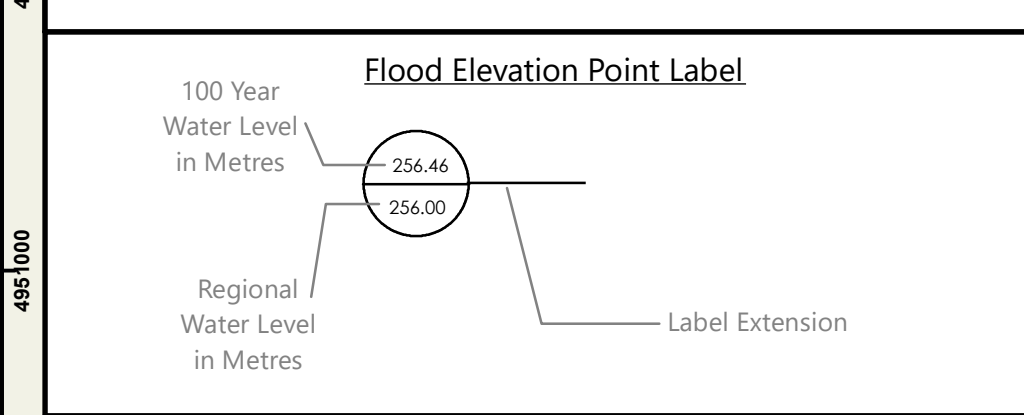
- Flow Direction
- Burnt River Centreline
- Cross-Sections
- Study Limit
- Timmins Storm Floodplain
- Flood Hazard Limit (1:100-year)
- Map Sheet Index
- 1m Contours

Key Map





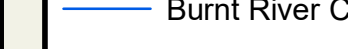

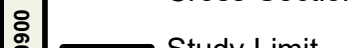
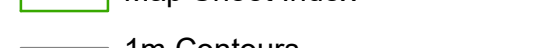


- Notes:**
- 1) LIDAR (Light Detection and Ranging) survey data collected Spring 2023, by Airborne Imaging.
 - 2) Contours produced by D.M. Wills using LIDAR.
 - 3) Field Survey of structures by Kawartha Conservation, using RTK GPS.
 - 4) Orthophotography SCOP091018.
 - 5) Vertical Datum - CGVD2013
 - 6) Horizontal Datum - CSRS(NAD83) UTM Zone 17N
 - 7) The flood inundation areas were delineated using the bathymetrically corrected LIDAR DTM produced by D.M. Wills Associates based on survey data provided by KRCA.
 - 8) Flood plan modelling was prepared by D.M. Wills Associates.
 - 9) This map is prepared for use in conjunction with the Burnt River Flood Plain Mapping Study, 2025.
 - 10) All mapped data meets provincial and federal geomatics guidelines and has been subject to peer review.
 - 11) Floodlines for tributaries of the Burnt River have not been delineated in these maps. Inundation shown in tributaries is strictly from backwatering of the Burnt River.
 - 12) This project is funded in part by the Government of Canada.

REVISIONS			
No.	Description	By	Date
1	Draft Floodplain Maps	RG	12/19/25
2	Final Floodplain Maps	RG	02/12/26

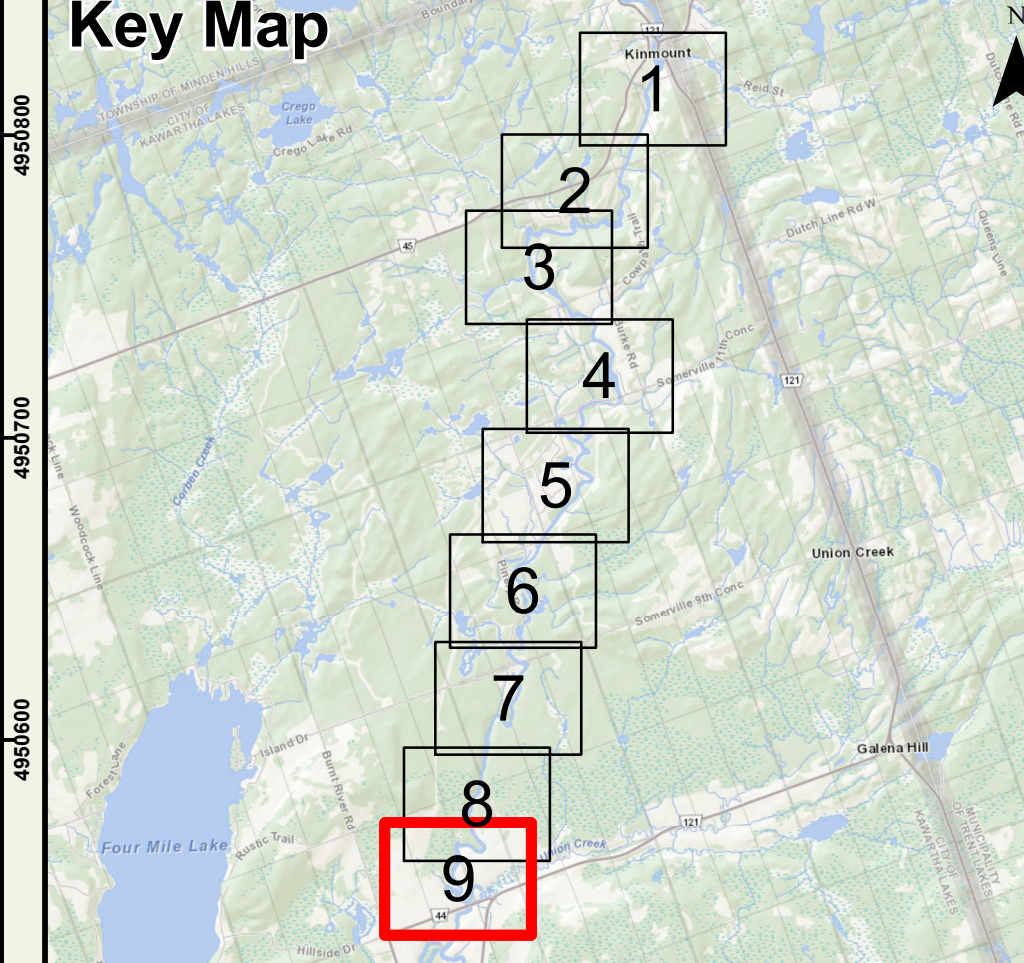


Burnt River
Floodplain Map
City of Kawartha Lakes
Printed: February 2026

Legend

-  Flow Direction
-  Flood Hazard Limit (1:100-year)
-  Burnt River Centreline
-  Cross-Sections
-  Study Limit
-  Map Sheet Index
-  1m Contours
-  Timmins Storm Floodplain

Key Map





- Notes:**
- 1) LIDAR (Light Detection and Ranging) survey data collected Spring 2023, by Airborne Imaging.
 - 2) Contours produced by D.M. Wills using LIDAR.
 - 3) Field Survey of structures by Kawartha Conservation, using RTK GPS.
 - 4) Orthophotography SCOP091018.
 - 5) Vertical Datum - CGVD2013
 - 6) Horizontal Datum - CSRS(NAD83) UTM Zone 17N
 - 7) The flood inundation areas were delineated using the bathymetrically corrected LIDAR DTM produced by D.M. Wills Associates based on survey data provided by KRC.
 - 8) Flood plan modelling was prepared by D.M. Wills Associates.
 - 9) This map is prepared for use in conjunction with the Burnt River Flood Plain Mapping Study, 2026.
 - 10) All mapped data meets provincial and federal geomatics guidelines and has been subject to peer review.
 - 11) Floodlines for tributaries of the Burnt River have not been delineated in these maps. Inundation shown in tributaries is strictly from backwatering of the Burnt River.
 - 12) This project is funded in part by the Government of Canada.

REVISIONS			
No.	Description	By	Date
1	Draft Floodplain Maps	RG	12/19/25
2	Final Floodplain Maps	RG	02/12/26

